

9

Leave the **Monolithic Church square** and go to the bottom of the King's Tower taking the **rue de la Grande Fontaine**. From this place, the « Jurats » governed Saint Emilion's Jurisdiction since the 13th century.

Nowadays the Jurade is the wine brotherhood of Saint Emilion. Each year, during the 3rd weekend of september, the Jurats go to the top of the tower and announce the opening of the harvest. The day ends with a great banquet.



The gastronomy vocabulary changed much since the Middle Ages. Complete the recipe of the banquet with the missing words :

Lamprey
Recipe
Banquet
Fry
Ingredients
Master chef
Simmer
Moisten
Wine

Ronan, the _____ of the restaurant, prepares the Jurade's _____. Robin helps him to prepare a dish, the Bordelaise _____. Robin prepares the _____. He can use Ronan's _____ book: « Cut the lamprey's tail and bleed it. Scald the lamprey during a minute. Then, cut into pieces and _____ in a pan. Do the same with the leeks, the garlic and the onions. Flambé the red _____ and add the blood. Put all into a pot, add bacon and herbs, and _____ with the sauce. Leave to _____ for 2 or 3 hours.

Go upstairs to the right of the King's tower. You will arrive near the convent where lived the sisters who invented the famous cookies of Saint Emilion. Turn right in the **rue des écoles** and go back to the Tourist Office.

10

Discover the name of the Michelin starred chef of the Hostellerie de Plaisance, who replaced the famous chef Philippe Etchebest, and for who work Robin.



If you find the answer, Robin has a surprise for you at the Tourist Office !!!

In Gironde, Robin invites you to discover many other tourist sites in fun way !



Office de Tourisme du Grand Saint-Emilionnais
 Place des Créneaux 33330 SAINT EMILION
 Tel: 33 (0)5 57 55 28 28—Fax: 33 (0)5 57 55 28 29
 Email: accueil@saint-emilion.tourisme.com
 Web: www.saint-emilion-tourisme.com
 Open all days, except the 25th december

Do not throw on the public highway

Sur les pistes de Robin



“ An invitation to delicacies ”

Level II



Date: _____



« Discovering the gastronomy of Saint-Emilion »

Hello, my name is Robin, I'm a kitchen help at the «Hostellerie de Plaisance », the restaurant in front of the Tourist Office.
I'm a real gourmet and I wanted to improve about the local specialities and the history of the gastronomy. I have heard about your detective skills. If you help me to discover the village and its secrets, you will be rewarded...

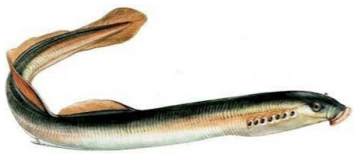


To help Robin, you have to answer some riddles in order to get 5 colored clues. Write the clues at the end of the game. Use a map of Saint-Emilion and a pen. Are you ready? Let's go !

- 1 From the **Place du Clocher**, look at the village. In the Middle Ages, Saint Emilion was a nice trading town, surrounded by a city wall and vineyards. Since 1999, this exceptional heritage is protected, such as the French gastronomy (since 2010) ! Find this symbol on the bell tower and the name of the organisation in charge of this protection.
Write the third missing letter :



- 2 At the bottom of the village, in the valley, flows the Dordogne. In this river lives a prehistoric animal that looks like an eel. It's a food speciality of the region. Thanks to this puzzle, guess its name :



My first can be powered by electricity, oil or kerosene and it's used to light.
My second is a synonym of a light « beam ».
The all is prepared with red wine and its own blood.

L _ _ _ _ y

- 3 Now turn back to the **tourist office**. In the Middle Ages, this building was a monastery where the monks lived. They ate in this room, around a large oak table, now disappeared. What is the name of this huge room in the monastery?

EF _ _ _ _ _



- 4 The monastery was organised around a **cloister**, the main courtyard surrounded by covered gallery. To access to it, cross the gate at the right of the tourist office. In the Middle Ages, the clergy levied a tax on crops. Find the round stone object used to measure the crops.

Which kind of crops were measured thanks to this stone ?
My first is the third of the alphabet
My second is a synonym of the word « true »



_ _ _ _ _ S

- 5 Stop in front of the map of St Emilion's Jurisdiction. This historical territory is now the area where we produce two kinds of wine named « Saint Emilion » and « Saint Emilion Grand Cru ». Solve this operation and complete the text :

$$8 \times _ = 40$$

« Saint Emilion's vineyard covers around 7_00 hectares. It is composed of about 8_0 châteaux or wineries, of which 80 are classified. The annual production is around 4_ millions of bottles. »

This number corresponds to the letter of the alphabet :

- 6 Now, leave the cloister and turn to the left in the «**rue des Girondins** ». You will cross two shops that make and sell Saint Emilion's speciality invented in the 17th century by the Ursulines nuns :

M _ _ _ _

- 7 At the end of the « rue des Girondins », cross carefully the « rue Guadet » and reach the **Cordeliers cloister**. If the door is open, go in and discover the beautiful cloister. Below it, about 20 meters deeper, there are 3 kilometers of underground quarries where is produced a sparkling wine. Guess the name of this wine thanks to this riddle (each number correspond to a letter) :

3 18 5 13 1 14 20

_ _ _ _ _ de Bordeaux

- 8 From the **place Cap du Pont**, go downstairs, cross the main street and go straight in the **rue de la Cadène**. It leads you to the main square where took place the market. The « **halles** » or covered market, building located on your right, sheltered food. Try to recognize the vegetables already known in the Middle Ages. Delete the 3 intruders :

